

## Description

The BYY53/54 are hermetically sealed 25A-diodes, which are available in different reverse voltage classes up to 1500V.

The diodes can be delivered with limited forward voltage and reverse current differences for parallel connecting in rectifier stacks and back-off-diodes

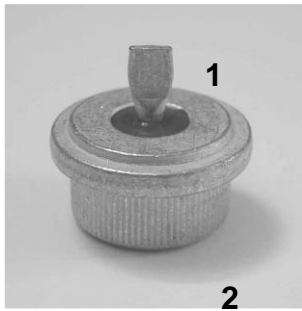
## Features

- Forward current 25A
- Reverse voltage 75V – 1500V
- Hermetic press-fit package
- Available in different modifications of the package
- For automotive applications requiring specific change control (i.e. parts qualified to AEC-Q100/101/200, PPAP capable, and manufactured in IATF 16949 certified facilities), please [contact us](mailto:contact@diodes.com) or your local Diodes representative.  
<https://www.diodes.com/quality/product-definitions/>

## Applications

- Power supplies
- Rectifier diode in car generators
- Rectifier bridges/stacks
- Back-off-diodes

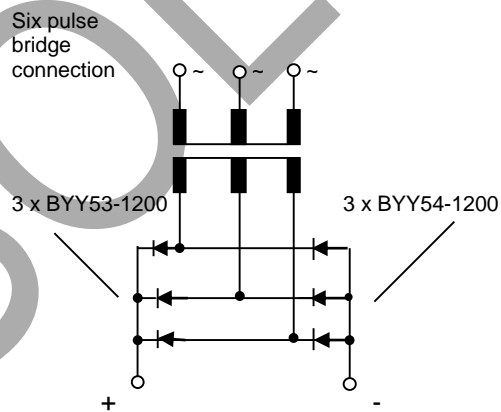
## Pinout details



BYY53: 1 – cathode; 2 - anode

BYY54: 1 – anode; 2 - cathode

## Typical application circuit



## Ordering information

| Device                    | Quantity per box | Options   |
|---------------------------|------------------|---|
| BYY53-75; ...; BYY53-1500 | 500              | The package quantities for the different package modifications are included in "PressFitPackageModifications.pdf" |
| BYY54-75; ...; BYY54-1500 | 500              |   |

## Device marking

Devices are identified by type. Colour of marking: BYY53- black, BYY54 – red

|            |  |
|------------|--|
| 422.....   | date code 422 = 2004 week 22                         |
| ZETEX      |  |
| BYY53..... | diode type   |
| 400.....   | repetitive peak reverse voltage $V_{RRM}$ (in V) 400 |

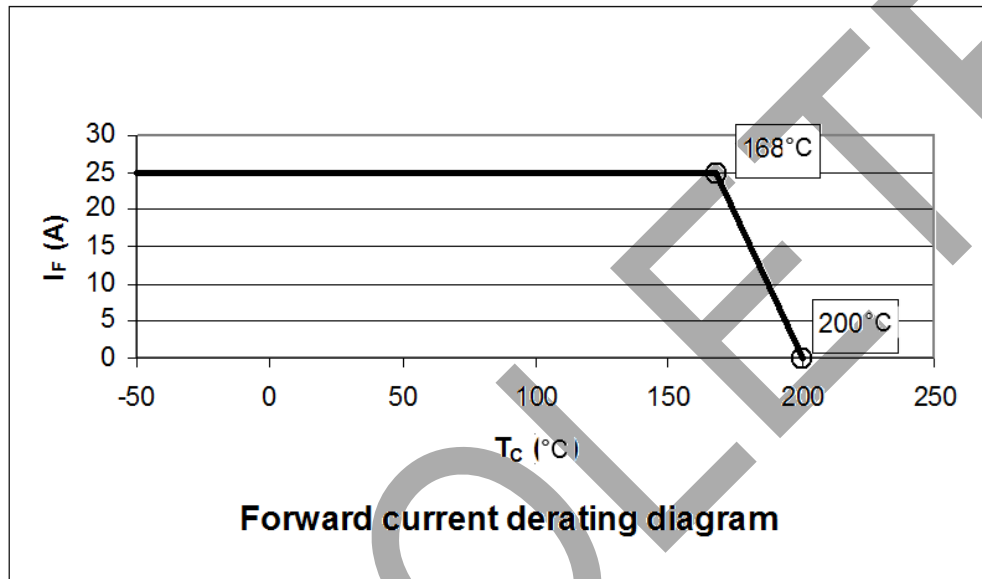
**Absolute maximum ratings (at  $T_{amb} = 25^{\circ}\text{C}$  unless otherwise stated)**

| Parameter                         |            |            | Symbol                    |               | Unit                 | Test condition  |
|-----------------------------------|------------|------------|---------------------------|---------------|----------------------|---|
| Repetitive peak reverse voltage   | BYY53-75   | BYY54-75   | $V_{RRM}$                 | 75            | V                    | $T_c = 150^{\circ}\text{C}$                                     |
|                                   | BYY53-100  | BYY54-100  |                           | 100           |                      |   |
|                                   | BYY53-150  | BYY54-150  |                           | 150           |                      |   |
|                                   | BYY53-200  | BYY54-200  |                           | 200           |                      |   |
|                                   | BYY53-300  | BYY54-300  |                           | 300           |                      |   |
|                                   | BYY53-400  | BYY54-400  |                           | 400           |                      |   |
|                                   | BYY53-500  | BYY54-500  |                           | 500           |                      |   |
|                                   | BYY53-600  | BYY54-600  |                           | 600           |                      |   |
|                                   | BYY53-700  | BYY54-700  |                           | 700           |                      |   |
|                                   | BYY53-800  | BYY54-800  |                           | 800           |                      |   |
|                                   | BYY53-900  | BYY54-900  |                           | 900           |                      |   |
|                                   | BYY53-1000 | BYY54-1000 |                           | 1000          |                      |   |
|                                   | BYY53-1100 | BYY54-1100 |                           | 1100          |                      |   |
|                                   | BYY53-1200 | BYY54-1200 |                           | 1200          |                      |   |
|                                   | BYY53-1300 | BYY54-1300 |                           | 1300          |                      |   |
|                                   | BYY53-1400 | BYY54-1400 |                           | 1400          |                      |   |
|                                   | BYY53-1500 | BYY54-1500 |                           | 1500          |                      |   |
| Forward current, arithmetic value |            |            | $I_{FAV}$                 | 25            | A                    |   |
| Surge forward current             |            |            | $I_{FSM}$                 | 425           | A                    | half-sine wave, $\leq 10\text{ ms}$                             |
|                                   |            |            |                           | 350           |                      | $T_J = 175^{\circ}\text{C}$ half-sine wave, $\leq 10\text{ ms}$ |
| Maximum rated value               |            |            | $\int i^2 dt$             | 900           | $\text{A}^2\text{s}$ | half-sine wave, $\leq 10\text{ ms}$                             |
|                                   |            |            |                           | 780           |                      | $T_J = 175^{\circ}\text{C}$ half-sine wave, $\leq 10\text{ ms}$ |
| Repetitive peak forward current   |            |            | $I_{FRM} = \pi * I_{FAV}$ | 79            | A                    | $f = > 15\text{ Hz}$  |
| Effective forward current         |            |            | $I_{FRMS}$                | 45            | A                    |   |
| Junction temperature              |            |            | $T_{Jmax}$                | 200           | $^{\circ}\text{C}$   |   |
| Storage temperature range         |            |            | $T_{stg}$                 | - 50 to + 175 | $^{\circ}\text{C}$   |   |

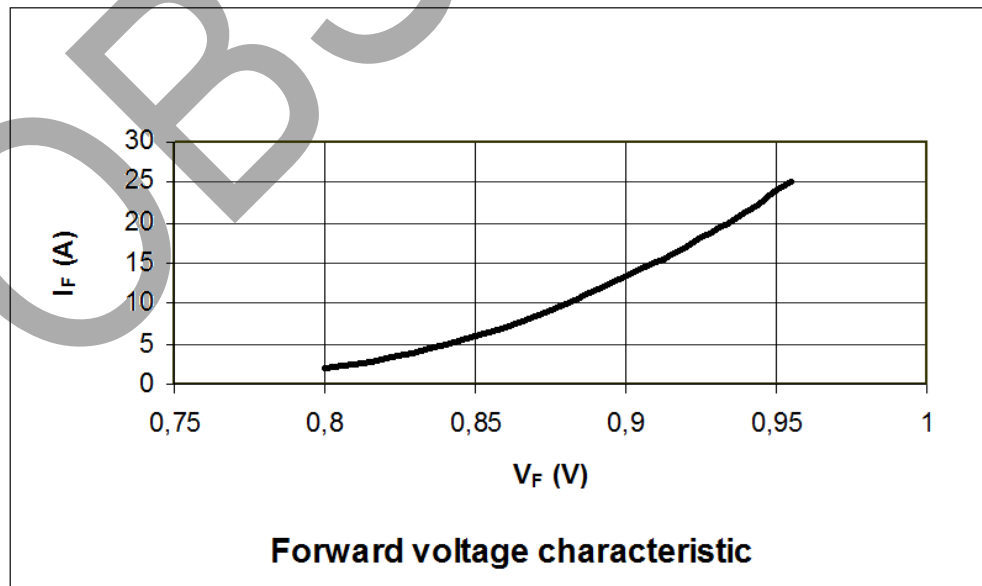
## Thermal resistance

| Parameter        | Symbol          | Value | Unit                 |
|------------------|-----------------|-------|----------------------|
| Junction to case | $R_{\theta JC}$ | 1.2   | $^{\circ}\text{C/W}$ |

## Thermal characteristics



## Electrical characteristics (at $T_{amb} = 25^{\circ}\text{C}$ unless otherwise stated)



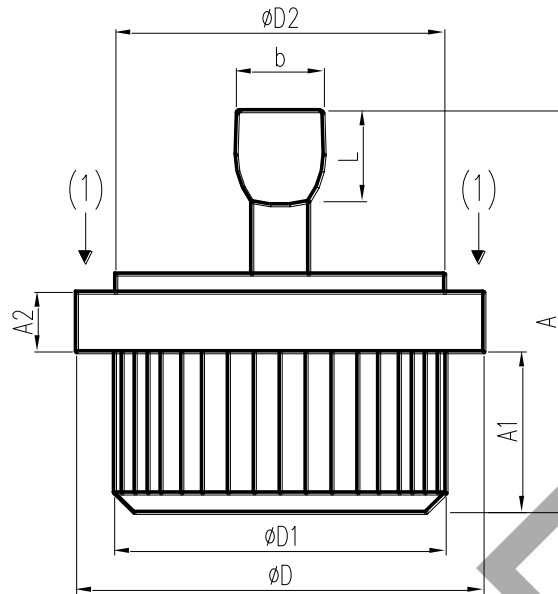
**Electrical characteristics** (at  $T_{amb} = 25^{\circ}\text{C}$  unless otherwise stated)

| Parameter                                  |  | Symbol     | Min. | Typ. | Max. | Unit       | Test conditions  |
|--|--|------------|------|------|------|------------|--|
| Forward voltage                            | BYY53-75...1200<br>BYY54-75...1200     | $V_F$      | -    | 0.95 | 1.1  | V          | $I_F = 25\text{ A}$ ,<br>measuring time<br>10ms (half-sine<br>wave)                              |
|  | BYY53-1300...1500<br>BYY54-1300...1500 |            | -    | 1.1  | 1.15 |            |  |
| Forward voltage<br>(information<br>values) | BYY53-75...1200<br>BYY54-75...1200     | $V_F$      | -    | 0.82 | -    | V          | $I_F = 20\text{ A}$ ,<br>measuring time<br>10ms (half-sine<br>wave), $T_J = 150^{\circ}\text{C}$ |
|  | BYY53-1300...1500<br>BYY54-1300...1500 |            | -    | 0.85 | -    |            |  |
|  | BYY53-75...1200<br>BYY54-75...1200     | $V_F$      | -    | -    | 1.20 | V          | $I_F = 35\text{ A}$ ,  |
|  | BYY53-1300...1500<br>BYY54-1300...1500 |            | -    | -    | 1.25 |            |  |
| Reverse<br>current                         | BYY53-75...150<br>BYY54-75...150       | $I_{RRM}$  | -    | -    | 3    | mA         | $T_J = 150^{\circ}\text{C}$ , at<br>$V_{RRM}$  |
|  | BYY53-200...1500<br>BYY54-200...1500   |            | -    | -    | 1.5  |            |  |
|  | BYY53-75...400<br>BYY54-75...400       | $I_{RRM}$  | -    | -    | 0.25 | mA         | at $V_{RRM}$   |
|  | BYY53-500...1500<br>BYY54-500...1500   |            | -    | -    | 0.1  |            |  |
| Threshold voltage (information<br>value)   |  | $V_{(FO)}$ | -    | 0.66 | -    | V          | $T_J = 175^{\circ}\text{C}$  |
| Slope resistance (information<br>value)    |  | $r_F$      | -    | 5.75 | -    | m $\Omega$ | $T_J = 175^{\circ}\text{C}$  |

**Options: Electrical characteristics for parallel connecting**  
 (at  $T_{amb} = 25^{\circ}\text{C}$  unless otherwise stated)

| Option | Parameter   | Symbol       | Min. | Typ. | Max. | Unit | Test conditions  |
|--------|---|--------------|------|------|------|------|--|
| 1      | Forward voltage<br>difference in one<br>category of forward<br>voltage  | $\Delta V_F$ | -    | -    | 0.05 | V    | $I_F = 25\text{ A}$ , measuring<br>time 10ms (half-sine<br>wave) |
| 2      | Reverse current in one<br>category of forward<br>voltage (only for<br>BYY53-300...1500 and<br>BYY54-300...1500) | $I_R$        | -    | -    | 0.01 | mA   | at $V_{RRM}$   |

## Packaging details



(1): touch area for press-in force

## Package dimensions

Dimensions in millimeters are control dimensions, dimensions in inches are approximate

| DIM | Millimeters |       |       | Inches |       |       |
|-----|-------------|-------|-------|--------|-------|-------|
|     | MIN         | TYP   | MAX   | MIN    | TYP   | MAX   |
| A   | 15,00       | 15,50 | 16,00 | 0,591  | 0,610 | 0,630 |
| A1  | 5,90        | 6,10  | 6,30  | 0,232  | 0,240 | 0,248 |
| A2  | 2,10        | 2,30  | 2,50  | 0,083  | 0,091 | 0,098 |
| b   | 3,10        | 3,40  | 3,70  | 0,122  | 0,134 | 0,146 |
| D   | 15,50       | 15,70 | 15,90 | 0,610  | 0,618 | 0,626 |
| D1  | 12,75       | 12,80 | 12,85 | 0,502  | 0,504 | 0,506 |
| D2  | 12,30       | 12,50 | 12,70 | 0,484  | 0,492 | 0,500 |
| L   | 3,00        | 3,50  | 4,00  | 0,118  | 0,138 | 0,157 |

**IMPORTANT NOTICE**

DIODES INCORPORATED MAKES NO WARRANTY OF ANY KIND, EXPRESS OR IMPLIED, WITH REGARDS TO THIS DOCUMENT, INCLUDING, BUT NOT LIMITED TO, THE IMPLIED WARRANTIES OF MERCHANTABILITY AND FITNESS FOR A PARTICULAR PURPOSE (AND THEIR EQUIVALENTS UNDER THE LAWS OF ANY JURISDICTION).

Diodes Incorporated and its subsidiaries reserve the right to make modifications, enhancements, improvements, corrections or other changes without further notice to this document and any product described herein. Diodes Incorporated does not assume any liability arising out of the application or use of this document or any product described herein; neither does Diodes Incorporated convey any license under its patent or trademark rights, nor the rights of others. Any Customer or user of this document or products described herein in such applications shall assume all risks of such use and will agree to hold Diodes Incorporated and all the companies whose products are represented on Diodes Incorporated website, harmless against all damages.

Diodes Incorporated does not warrant or accept any liability whatsoever in respect of any products purchased through unauthorized sales channel. Should Customers purchase or use Diodes Incorporated products for any unintended or unauthorized application, Customers shall indemnify and hold Diodes Incorporated and its representatives harmless against all claims, damages, expenses, and attorney fees arising out of, directly or indirectly, any claim of personal injury or death associated with such unintended or unauthorized application.

Products described herein may be covered by one or more United States, international or foreign patents pending. Product names and markings noted herein may also be covered by one or more United States, international or foreign trademarks.

This document is written in English but may be translated into multiple languages for reference. Only the English version of this document is the final and determinative format released by Diodes Incorporated.

**LIFE SUPPORT**

Diodes Incorporated products are specifically not authorized for use as critical components in life support devices or systems without the express written approval of the Chief Executive Officer of Diodes Incorporated. As used herein:

A. Life support devices or systems are devices or systems which:

1. are intended to implant into the body, or
2. support or sustain life and whose failure to perform when properly used in accordance with instructions for use provided in the labeling can be reasonably expected to result in significant injury to the user.

B. A critical component is any component in a life support device or system whose failure to perform can be reasonably expected to cause the failure of the life support device or to affect its safety or effectiveness.

Customers represent that they have all necessary expertise in the safety and regulatory ramifications of their life support devices or systems, and acknowledge and agree that they are solely responsible for all legal, regulatory and safety-related requirements concerning their products and any use of Diodes Incorporated products in such safety-critical, life support devices or systems, notwithstanding any devices- or systems-related information or support that may be provided by Diodes Incorporated. Further, Customers must fully indemnify Diodes Incorporated and its representatives against any damages arising out of the use of Diodes Incorporated products in such safety-critical, life support devices or systems.

Copyright © 2020, Diodes Incorporated

[www.diodes.com](http://www.diodes.com)